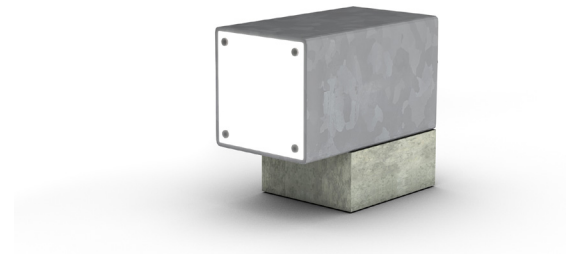
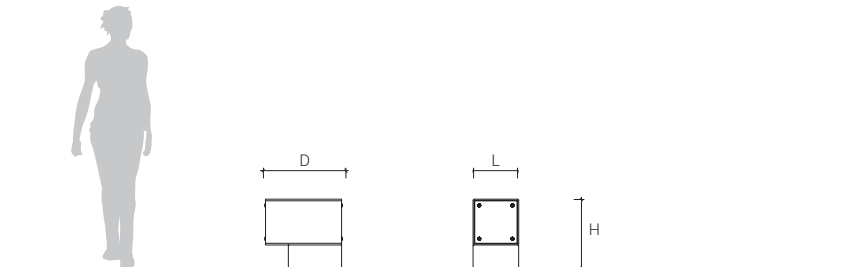


Kylie Bickle's Cargo range is comprised of modular furniture elements, each fabricated using a combination of concrete, hardwood and steel. These modular elements can be used individually or in groups, allowing for flexible and economic design. Cargo is fabricated in robust materials to withstand harsh environmental elements.



PRODUCT CODE	DESCRIPTION	L (mm)	D (mm)	H (mm)
CGS10-B-GRC-MS-T-PC	Cargo MODULAR BENCH, path light / glass reinforced concrete base / mild steel powder coated frame / polycarbonate opal	300	515	460



MATERIALS

- FRAME** Glass reinforced concrete base
 Mild steel (powder coated) light housing
 Stainless steel (electro polished) fixings
 Polycarbonate opal sheet
- FIXINGS** Chemical anchors, cast-in hold down

ADDITIONAL INFORMATION

- WARRANTY** See UAP Warranty Information
- MAINTENANCE** See UAP Maintenance Information

CONTACT

For more information and for pricing, email supply@uapcompany.com or call +1 212 727 2819 for US or +61 7 3630 6300 for Australia.

