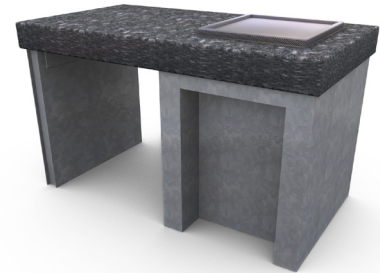
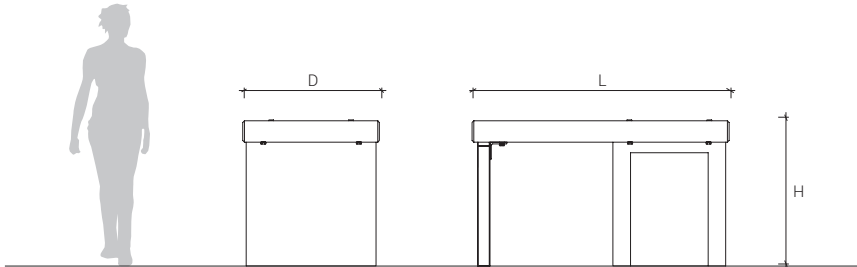


Originally designed for the Kelvin Grove Campus of the Queensland University of Technology, the Campus range is characterised by refined, understated curvatures that complement the natural environment. The robust forms are designed to withstand environmental and seasonal elements.



PRODUCT CODE	DESCRIPTION	L (mm)	D (mm)	H (mm)
CMP08	Campus BBQ	1500	850	800



## MATERIALS

FRAME	Mild steel (galvanised) Mild steel (power coated)
BENCH TOP	Cast concrete (slate grey) with honed and sealed finish Stainless steel Double BBQ unit available
FINISH	Custom colour powder coating available, galvanised
FIXINGS	11x M10 bolts (cast-in hold down bolts, Dynabolts or chemical anchors)

## ADDITIONAL INFORMATION

AVAILABILITY	Not yet available in the US
WARRANTY	See UAP Warranty Information
MAINTENANCE	See UAP Maintenance Information

## CONTACT

For more information and for pricing, email [supply@uapcompany.com](mailto:supply@uapcompany.com) or call +1 212 727 2819 for US or +61 7 3630 6300 for Australia.